

## 2 E-Change Households Renters



# 1 E-Change Households

E-changers are people who have moved away from large cities to smaller regional, coastal, or rural towns, and are working remotely using information technology and digital services.

They are often seeking to live a more affordable, less congested, non-metropolitan lifestyle whilst remaining digitally connected to the city through their employment.

The COVID-19 pandemic has accelerated the rate of e-change migration, as work from home policies allowed people to work and collaborate remotely without physically attending a workplace on a daily basis.



## Before you make the move



Discuss internet access with your landlord prior to committing to renting a property.

---



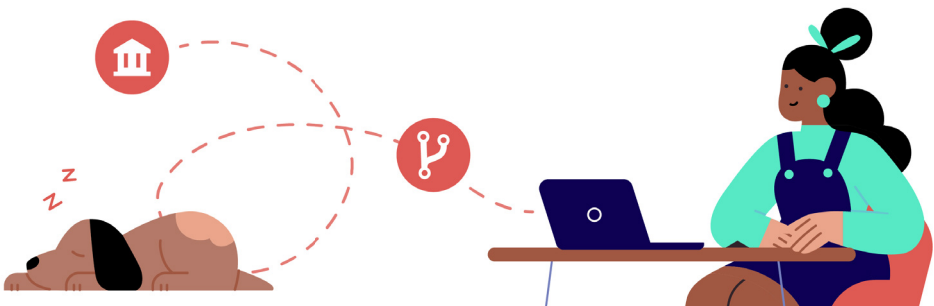
If you are short term renting or unable to access fibre internet connection, investigate speed of mobile 4G/5G. Some people have found this adequate for remote work.

---



Some popular e-change regional areas have very low rental vacancy rates. Beware that it may be difficult to secure other rental leases if your current one is not renewed.

---



# Before you make the move



Remember that you're going to be providing much of your own heating and cooling when working from home, so check your rental property has affordable and sustainable options in terms of maintaining thermal comfort, such as adequate insulation, sun exposure, and energy efficient appliances.

---



Working from home can be an isolating experience. You might want to consider moving to a regional locale that has good library and other public facilities, including free wifi, so that you have other options available to you than working full time from home.

---

# E-Change and Remote Work in Australia

## Advice Sheets for Stakeholders



*The operation of the Australian Communications Consumer Action Network is made possible by funding provided by the Commonwealth of Australia under section 593 of the Telecommunications Act 1997. This funding is recovered from charges on telecommunications carriers.*